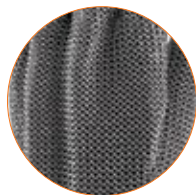




CUT RESISTANCE BERKELEY

Construction

316L Stainless Steel



Chainmesh with cut & puncture protection



Reversible wearing for left or right

Palm Type

Chainmesh

Grade

Premium Cut Resistant and Puncture Protection



Adjustable brass button fastening



Nylon strap for safety

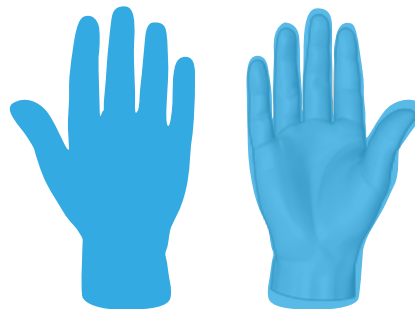


Features

- 316L stainless steel for hygiene purposes
- Quick and easy to sterilise
- Chainmesh with cut and puncture resistance
- Five fingers full palm fitting
- Lightweight and easy to wear
- Reversible wearing for left or right
- Nylon strap for added safety
- Sizes range from S(7) - XL(10)

Protection Coverage

 Cut & Puncture Protection



EN14328



E1082-1

